



LEARN IN JAPAN, THRIVE IN JAPAN

IT Department

International IT Business Course

Basic IT
Department

International Business Course

Business Department

International Business Management Course

GUIDE
2026



学校法人 三木学園

和歌山コンピュータビジネス専門学校

WAKAYAMA COMPUTER BUSINESS COLLEGE
和歌山電腦商務專門學校



President's Greeting

FOUNDING SPIRIT

Wakayama Computer Business College
Principal: Shigeharu Miki

Our school was founded in 1987 as an IT vocational school. Since then, the student body has expanded to include those who have just graduated from high school, those who have graduated from university, and those who are working adults. Currently, more than 4,700 students are active in society as IT engineers and public servants. The International Business, International IT Business, and International Business Management courses (hereinafter referred to as the International Courses) teach not only Japanese language acquisition, but also Japanese society, culture, history, and IT skills. We also hope to provide opportunities for students to enjoy communicating with Japanese people. We hope that you will have various opportunities for international exchange with our enthusiastic and experienced teachers. It is our wish that all of our students will contribute to world peace and the future of humanity.

EDUCATIONAL PHILOSOPHY

Focus on development:

"Develop IT talent for global exchange and Japanese firms."

Focus on IT:

"Train IT professionals for international and Japanese sectors."

Most concise:

Develop IT talent for international exchange."

In recent years, there has been an increasing interest in Japanese and IT in many countries around the world, and there is a demand for high-quality Japanese language skills with deep knowledge and communication skills. In the field of business, there is a demand for the acquisition of skills necessary for Japanese business, such as retail marketing and online shop skills, office software, graphic software, photo editing software, bookkeeping, IT passports, and Japanese business customs and culture. The IT, Basic IT, and Business courses for international students are designed to develop human resources who can play an active role internationally through education.



COURSE PHILOSOPHY AND EDUCATIONAL GOALS



TO DEVELOP INTERNATIONAL HUMAN RESOURCES WITH A DEEP UNDERSTANDING AND KNOWLEDGE OF IT

We will develop international human resources who have a deep knowledge and understanding of IT and business, as well as communication skills, by understanding the globalized modern society from a macro perspective.



CURRICULUM THAT EMPHASIZES THE DEVELOPMENT OF PRACTICAL JAPANESE LANGUAGE EDUCATION SKILLS

We will develop the basic qualities of an international person, emphasize communication skills centered on Japanese, and foster values and inclusiveness that accept different cultures while valuing Japan and one's own identity. Furthermore, we aim to develop human resources who can play an active role in the field of international exchange through a curriculum that provides deep knowledge and advanced practical skills in Japanese history, culture, society, Japanese language, and Japanese language education.

INDUSTRIAL SPECIALIZED COURSES

In the IT Department/International IT Business Course and the Basic IT Department/International Business Course, we develop engineers with a deep understanding and knowledge of Japan and the IT field, while understanding modern society from a macro perspective and acquiring foreign language communication skills.

INTERNATIONAL IT BUSINESS COURSE (2-YEAR)

INTERNATIONAL BUSINESS COURSE (1-YEAR)



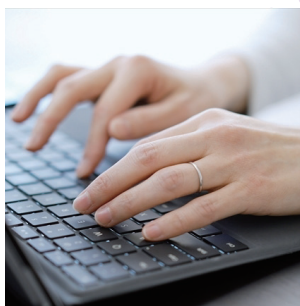
We learn from the basics of IT, focus on business software and web technology necessary for website creation, and aim to find employment in Japan. We train computer development engineers in areas such as programming and software development, which are required by companies

TARGET PROFESSIONS



CAD OPERATOR

CAD operator is someone who uses CAD drawing software to create drawings under the direction of architects and designers. CAD can be used to create both plan and three-dimensional drawings, and is used in a variety of industries, including construction, machinery, electrical, and apparel.



PROGRAMMER

programmer is someone who writes the work instructions (= programs) necessary to operate a computer using a programming language. Programs are incorporated into a variety of things we use on a daily basis, such as home appliances, cars, and smartphones, and we are unknowingly indebted to programming. There are several types of programming languages used, and languages such as C, Ruby, Python, and Java are widely used. Programmers are required to create optimal programs based on the specifications created by system engineers.

TARGET QUALIFICATIONS

- IT Passport Examination
- MOS
(Microsoft Office Specialist)
- Japanese Language Proficiency Test (JLPT)
- Business Japanese Language Proficiency Test (BJT)
- Foreign Worker Aptitude Test
- Fundamental Information Technology Engineer Examination
- CAD Utilization Technology Engineer Examination



SAMPLE TIMETABLE

	Time	Monday	Tuesday	Wednesday	Thursday	Friday
	9:00 ~ 9:10	Homeroom	DAY OFF		Homeroom	Homeroom
1	9:10 ~ 9:55	Computer Basics			Introduction to Website Creation	Basic IT English
2	10:00 ~ 10:45	Computer Basics			Introduction to Website Creation	Basic IT English
3	10:55 ~ 11:40	CAD Basics			Word/Excel	Office Software Utilization
4	11:45 ~ 12:30	CAD Basics			Word/Excel	Office Software Utilization
12:30~13:15		Lunch Break			Lunch Break	
5	13:15 ~ 14:00	CANVA Flyer Creation			Introduction to the IT Industry	Presentation Basics
6	14:05 ~ 14:50	CANVA Flyer Creation			Programming	Japanese Language Class
7	15:00 ~ 15:45	Career Guidance			Introduction to Programming	Japanese Language Class



■ International IT Business Course

■ International Business Course

School Days (Example):
Monday, Thursday, Friday

※Please note that this may change depending on the year.

COMMERCIAL PRACTICAL SPECIALIZED COURSE

INTERNATIONAL BUSINESS MANAGEMENT COURSE (2-YEAR)

In the International Business Management Course of the Business Department, students learn methods to manage various resources, assets, and risks in business to optimize management effectiveness, and acquire international communication skills.



We learn Microsoft Office (Word, PowerPoint, Excel, etc.) and train business engineers who are needed in various industries.

TARGET PROFESSIONS



HOTEL STAFF

Communication skills using not only Japanese but also English and native languages, as well as manners and a spirit of hospitality, are required. We aim to find employment by taking practical classes from instructors with practical experience, assuming actual workplaces. You can play an active role while being involved in the Japanese tourism industry.



TRAINEE MANAGEMENT

In Japan, where the number of foreign workers is rapidly increasing, trainee management is a very high-demand profession. We acquire Japanese Language Proficiency Test N2 and N1 and provide support services for trainees. This includes not only interpreting internal rules and operations, but also providing guidance on living manners in dormitories.

TARGET QUALIFICATIONS

- MOS (Word/Excel)
- Bookkeeping Certification Examination
- Japanese Language Proficiency Test (JLPT)
- Business Japanese Language Proficiency Test (BJT)
- General Knowledge and Manners Test for Working Adults
- Foreign Worker Aptitude Test



SAMPLE TIMETABLE

	Time	Monday	Tuesday	Wednesday	Thursday	Friday
	9:00 ~ 9:10	Homeroom	Homeroom	Homeroom	Homeroom	Homeroom
1	9:10 ~ 9:55	Introduction to Marketing	Presentation	Business Manners	Tourism Studies	Business IT Utilization
2	10:00 ~ 10:45	Introduction to Marketing	Presentation	Business Manners	Tourism Studies	Business IT Utilization
3	10:55 ~ 11:40	Japanese Language Class	Basic Business English	Japanese Language Class	Hospitality Studies	Economics
4	11:45 ~ 12:30	Japanese Language Class	Basic Business English	Japanese Language Class	Hospitality Studies	Economics
12:30~13:15		lunch break				
5	13:15 ~ 14:00	Japanese Language Class	IT Literacy	Japanese Business Documents	Advanced Business English	Japanese Language Class
6	14:05 ~ 14:50	Japanese Language Class	IT Literacy	Japanese Business Documents	Advanced Business English	Japanese Language Class
7	15:00 ~ 15:45	Career Guidance	Customer Service Manners	Word/Excel	Interview Practice	Interpretation



■ International Business Management

Class A: Monday, Tuesday, Wednesday

Class B: Monday, Tuesday, Wednesday

Class C: Tuesday, Wednesday, Thursday

※Please note that this may change depending on the year.

YEARLY SCHEDULE



4 April

Entrance Ceremony

5 May

Joint Company Information Session

6 June

Japanese Language Proficiency Mock Test

7 July

First Japanese Language Proficiency Test

8 August

Summer Vacation

9 September

Field Trip & Japanese Culture Experience

10 October

BJT Business Japanese Proficiency Test

11 November

Disaster Prevention Drill & Japanese Language Proficiency Mock Test

12 December

Second Japanese Language Proficiency Test

1 January

New Year's Holidays

2 February

Speech Contest

3 March

Spring Vacation





Q: I'm worried about my poor Japanese when I get sick or injured.

A: In case of an emergency, our staff will escort you to the hospital. In urgent cases, we will also arrange an ambulance. Please rest assured.

Q: I would like to consult about further education.

A: You can consult at company information sessions, seminars for interview preparation, and individual consultations with your homeroom teacher. We also provide guidance on resumes and interviews.

Q: I'm worried about my Japanese ability and specialized skills, is it okay?

A: We have a wide range of employment results, including specific skills in specialized fields. Please rest assured.

Q: I want to live alone, so I want to find an apartment, but I don't know how to find one.

A: We will introduce you to affiliated dormitories and real estate companies that are friendly to foreigners.

SCHOOL LIFE Q & A

CAREER SUPPORT

The homeroom teacher will fully support each student's career path after graduation with a thorough and comprehensive approach.



Guidance on resume preparation, interview preparation, company information sessions, introductions to vocational schools and universities, special lectures inviting Japanese people from companies, and field trips.

Career Paths After Graduation:

Musashi Co., Ltd.	Shinko Giken Co., Ltd.	Kansai Airport Enterprise Co., Ltd.
Kofuku Construction Co., Ltd.	Tominaga Co., Ltd.	etc.
Nippon Panayuz Co., Ltd.	Adpack Co., Ltd.	
Maruki Wood Industry Co., Ltd.	VOCO Osaka Central	



Career Paths After Graduation:

Kobe Future Healthcare University, Kyoto University of Information Science and Technology, Otemae University, etc.

STUDENT SUPPORT

ABOUT SCHOLARSHIPS

Learning incentive grants are provided to those who excel in both academics and character and have difficulty in attending school due to economic reasons.

VISA APPLICATION PROCEDURES

Once your admission to our school from a Japanese language school is confirmed, the teacher will carefully support your visa application procedures. Also, if you decide to work in Japan after graduation, the school will fully support the procedures for changing to a work visa.

ABOUT HOUSING

We introduce safe and comfortable nearby apartments to international students. Please feel free to consult with the school.





Introduction to Wakayama Prefecture

It is located in an excellent location about 30 minutes by car from Kansai International Airport. The security is better than in urban areas, and the cost of living and housing are low. The school's tuition is also one of the lowest in the Kansai region.



MOUNT KOYA

It is a sacred site of Shingon Buddhism, representing Japan, opened by Kukai about 1200 years ago. It is a World Heritage Site with 117 temples standing side by side.



KUMANO KODO

It is a World Heritage Site and a pilgrimage route with a long history to the three Kumano mountains.



SHIRAHAMA

It is a beautiful coast with a white sandy beach stretching for about 600 meters and has been selected as one of the "100 Best Beaches in Japan".



Message from Teachers

At our school, the classes in each course are mostly practical, and there are many opportunities for exchange with international students from other countries, so students get along well and everyone is lively. We sincerely look forward to welcoming new students.

All faculty and staff.

STUDENT INTRODUCTIONS



CHEN LONG

Nationality: Chinese

Previous School: Human Academy Japanese Language School

Employment Destination:
Maruki Wood Industry Co., Ltd.

I am Ryu, from China, and have been studying in Japan for four years. Initially, I studied Japanese in Osaka, but then chose to attend vocational school at Wakayama College because I wanted to focus on IT and graduate quickly to start working. I chose Wakayama College because it has an IT program, reasonable tuition, a three-day-a-week schedule, and the cost of living in Wakayama is lower than in Osaka.

I moved from Osaka to Wakayama and rented a house for 18,000 yen per month. Although the income in Wakayama is not as high as in Osaka, the low cost of living, including electricity and tuition fees, has helped me have a better quality of life. I feel reassured because the teachers are available for support after school, and are very patient and enthusiastic.

In the first year, I had plenty of time to settle in and study, but in the second year, I started preparing for interviews and job hunting. The job placement teachers provided us with dedicated support, helping us find good companies with suitable jobs and salaries. I realized that the knowledge learned at school is foundational, so having clear goals and self-study are very important for career development.



NGUYEN TUAN KHANH

Nationality: Vietnam,

Previous School: Osaka Minami Japanese Language School

Employment Destination:
Kofuku Construction Co., Ltd.

The study period at school was a very valuable experience. I not only acquired solid specialized knowledge but also honed essential practical skills. The vibrant and open learning environment, the dedication of the teachers, and the cooperation of friends created unforgettable memories. The Auto CAD class was the most impressive. The teacher provided enthusiastic guidance, helped me understand practical applications, pass the certification exam, and confidently apply my skills in my future work.



PHAM THI THANH

Nationality: Vietnam

Previous School: Osaka Tourism Business Japanese Language School

Employment Destination:
Kansai Airport Enterprise Co., Ltd.

Six years ago, I came to Japan from Vietnam to study abroad. After two years of studying Japanese language, I switched to studying IT at Wakayama Computer Business College because of the low tuition, flexible schedule, and good job placement support. At the language school, I mastered the basics of Japanese and experienced Japanese society through part-time work. At the college, I learned IT from basics to advanced levels. Thanks to the three-day-a-week schedule, I balanced study and life. Life in Japan was challenging, but I overcame it with the help of others. I learned specialized knowledge and the politeness and diligence of the Japanese people. I advise fellow international students to strive for their goals. Learn and grow in Japan, and become a bridge between Vietnam and Japan. I sincerely thank my teachers, friends, and family for their support.



BUI THI KHANH LINH

Nationality: Vietnam

Previous School: Osaka Tourism Business Japanese Language School

Employment Destination:
voco Osaka Central

Six years in Japan have flown by, and I've learned so much. The two years at Wakayama College were invaluable. I chose the school for its affordable tuition and the three-day-a-week schedule, which allowed me to study efficiently. The teachers were enthusiastic and supportive, helping with both studies and life. A Vietnamese interpreter helped me overcome language barriers. Thanks to the school's job placement support, I found my dream job. Wakayama College is a great place to meet international friends and learn from excellent teachers. I recommend everyone to have a fulfilling study abroad experience here.



KOIRALA SUBASH



Nationality: Nepal

Previous School: JVC Academy

Employment Destination:
Konii Chemical Co., Ltd.

Introduced by my sister, I came to Japan to study abroad. After researching various options, I chose Wakayama Computer Business College for its affordable tuition. I chose the Business Management Course as my further education destination because there are many types of jobs available in the business field.

I was able to learn thoroughly through the easy-to-understand classes. At first, I was nervous and couldn't speak up, but now I can actively express my opinions and participate more and more in class. It was difficult to find time to study because I was working part-time from late at night until early in the morning. However, I was able to continue because the classes were easy to understand. I was able to receive job offers from two companies. If you are unsure, please come and visit us.



OLI KUMAR MADHAV

Nationality: Nepal,

Previous School: Nissei Japanese Language School

Employment Destination: M Art Seal Co., Ltd.

Through the introduction of a senior, I chose Wakayama Computer Business College because Japan has a high level of IT and the school has a track record of IT-related employment. I learned various subjects at school, but CAD was particularly memorable for me. Wakayama has a lot of nature, and I have the impression that the school teachers are very enthusiastic. Before entering the school, I was worried that studying might be difficult, but I was not worried because I was able to consult with teachers and friends. The school was three days a week, so I was able to commute from Osaka. If you never take a break and study hard, you will definitely be able to get a job, so please do your best.



NGUYEN MINH HIEU

Nationality: Vietnam

Previous School: Osaka Tourism Business Japanese Language School

Employment Destination:
Musashi Co., Ltd.

These two years have been a journey full of challenges, but also very meaningful. Here, I not only acquired various specialized knowledge, but also grew significantly in my way of thinking and working. I am especially grateful to my close friends and the teachers who gave me enthusiastic guidance. Thanks to everyone's support, I was able to find a job that matched my passion. The memories I gained here will be a valuable asset in my life.



BIPLOB MD NAZMUL HOSAIN

Nationality: Bangladesh, Previous School: One Purpose International Academy

MIA MD MAMUN

Nationality: Bangladesh, Previous School: Asia House Affiliated Umikaze Japanese Language School



Employment Destination:
Kofuku Construction Co., Ltd.

①What was the most difficult thing during your time at school?
It was hard to communicate with everyone because there were a lot of online classes due to COVID. But that made me realize how precious the time spent with everyone in school was.

②Which classes were most helpful?
Thanks to the teacher, I came to like reading comprehension classes, which I used to struggle with. They always gave us interesting topics, and I became more interested in Japanese news.

③What's good about this school?
The teachers are kind and easy to talk to about anything. There are many difficulties for foreigners living in Japan, but I was able to spend two years with peace of mind because they provided warm support.

④What would you like to say to new students?
Please work hard on your Japanese and specialized subjects for your job search. If you work hard, it will definitely lead to employment.

⑤Was it good to live in Wakayama?

At first, I had trouble with the change in living environment and finding a part-time job. Especially with the impact of COVID, it was difficult to find a job, and I had financial difficulties. However, a senior at school introduced me to a part-time job, and I could consult with the teachers about anything, so the environment gradually became easier to live in. The school is close, so I hardly have to commute, which gave me plenty of time and physical energy. Not needing a commuter pass was also easy on my wallet. I feel that the part-time job pay is relatively the same as in Osaka, depending on the time and content.

⑥What are your future goals?

Right now, I want to contribute to the company I joined. I want to improve my skills and become a good senior who can give a lot of advice to the Wakayama Computer Business College juniors who join the company in the future. I'll be getting my driver's license soon, so my goal is to save money and buy a nice car in the future. Further in the future, I want to get a permanent visa and contribute to the development of my home country.

専修学校について

Về trường chuyên môn What is a vocational school? 关于专修学校

専修学校とは高等学校卒業程度の学力を入学資格とする、実践的な職業教育を行う教育機関です。学校教育法では、専修学校には専門課程を設置した専修学校のみが専門学校と称してよいことになっています。専門の種別では IT、情報処理、デザイン、ビジネスなどがあります。執行年限は 1 年以上で年間授業時間は 800 時間以上と規定されています。このうち執行年限 2 年以上、かつ年間授業時間が 1,700 時間以上で専門学校の卒業者には専門士の称号が付与されます。専門士には大学の編入学資格が与えられます。

Trường chuyên môn là trường có thể nhập học sau khi tốt nghiệp trường cấp 3 với học lực tiêu chuẩn ,với cơ sở giáo dục mang tính thực tiễn có thể vận dụng đi làm sau khi tốt nghiệp .Theo luật giáo dục học đường , Trường chuyên môn là trường chỉ dạy những kiến thức lên quan đến chuyên ngành học .Có các ngành học như sau IT , xử lý thông tin , thiết kế , kinh tế . Đối với hệ 1 năm phải học trên 800 tiếng .Đối với hệ 2 năm , phải trên 1700 tiếng thì mới được cấp bằng tốt nghiệp . Sau khi có bằng tốt nghiệp trường chuyên môn có thể chuyển lên học năm 3 đại học .

A vocational school is a type of educational institution that offers a highly practical, vocational education to students. Admission requires a scholastic ability roughly equivalent to that of a high school graduate. According to the School Education Law, only vocational schools that offer specialized courses can be referred to as specialized training colleges. Specializations include IT, information processing, design, business, and more. Courses are required to last at least one year and must consist of 800 class hours per year or greater. College graduates who complete a course lasting at least two years and consisting of 1,700 class hours per year or greater are entitled to receive a professional diploma. Professional diplomas are eligible for transfer admission to a university.

专修学校是以高中毕业程度的学力为入学资格，进行实践性职业教育的教育机构。根据《学校教育法》，只有设置了专门课程的专修学校才可以称为专门学校。专门课程类别包括 IT、信息处理、设计和商务等。规定执行年限在一年以上，每年上课时间在 800 小时以上。其中，执行年限为两年以上，且每年上课时间为 1,700 个小时以上的专门学校毕业生将获得“专门士”的称号。拥有专门士资格的学生将被授予升入大学本科的资格。

本校は専修学校であるため長期課程で学ぶ留学生に対して文部科学省、和歌山県などから様々な公的支援を受けることができます。

Đối với du học sinh theo học khóa 2 năm tại trường có thể nhận được các hỗ trợ xã hội từ bộ văn hóa giáo dục ,thể thao , công nghệ .

Since Wakayama Computer Business College is a vocational school, international students enrolled in long-term courses are eligible to receive a variety of public aid from the Ministry of Education, Culture, Sports, Science and Technology (MEXT), Wakayama Prefecture, etc.

由于本校是专修学校，学习长期课程的留学生可以从日本文部科学省、和歌山县等处活得各种各样的官方支援。

また長期課程で学ぶ学生は、専門士を取得でき、資格を問わず通学定期や学割の制度が適用されるなど専門学校ならではの特典が多数あります。

Thêm vào đó, đối với học sinh theo học khóa học 2 năm có thể lấy được bằng tốt nghiệp, nhận được hỗ trợ làm thẻ tàu, các đặc quyền khác đối với du học sinh
Students enrolled in long-term courses may also receive professional diplomas, as well as many other unique benefits, such as student commuter passes and other student discounts.
另外，学习长期课程的学生可以取得专门士资格，且无论是否具有资格均能购买学生月票，并享受学生折扣等专门学校专享的多种优惠政策。

提携校

Trường liên kết Affiliated School

名称 資格スクール大栄 和歌山教室 Trường cấp chứng chỉ DAIEI WAKAYAMA
授業形式 オンデマンド（映像授業） Hình thức học bằng video trên internet

講座内容 Nội dung khóa học

ビジネス会計分野 Lĩnh vực kế toán doanh nghiệp

簿記経理講座、ファイナンシャルプランナー講座、
税理士講座、不動産分野 宅地建物取引主任者

Khóa học chứng chỉ kế toán chứng từ ghi sổ ,
Người lập kế hoạch tài chính , Kiểm kê thuế , lĩnh vực bất động sản ,

マンション管理士管理業務主任者講座 Người chịu trách nhiệm quản lý chung cư

法律業務分野 Lĩnh vực nghiệp vụ Tư pháp

行政書士講座 Khóa học chứng chỉ hành chính

社会保険労務士講座 Khóa học bảo hiểm lao động ,và an sinh xã hội

司法書士講座 Khóa học Nhân viên tư pháp

医療福祉分野 Lĩnh vực phúc lợi Y tế

医療事務講座 Khóa học văn phòng Y tế

公務員分野 Lĩnh vực viên chức nhà nước

初級 公務員講座 Khóa học viên chức nhà nước hệ sơ cấp

上級 公務員講座 Khóa học viên chức nhà nước hệ cao cấp

沿革

Lịch sử History

1983 年 5 月
日本ソフトウェアデザイン（株）を阿倍野区に設立

1986 年 12 月
名古屋支店を開設

1987 年 4 月
和歌山コンピュータビジネス専門学校開設

1988 年
大阪本社を西心斎橋に移転

1990 年 5 月
和歌山営業所を設立 大阪本社を南船場に移転

2002 年 1 月
東京営業所を神田に開設

2006 年 5 月
東京営業所を東京支店に昇格

2006 年 7 月
大阪本社を博労町に移転

2007 年 9 月
東京支店を東五反田に移転

2009 年 6 月
名古屋支店を丸の内に移転

2009 年 7 月
東京支店を世田谷に移転

2011 年 2 月
ISMS 取得

2015 年 1 月
ISO 規格改定登録

2016 年 10 月
名古屋支店を名古屋駅に移転

現在に至る

Năm 1983 tháng 5
Thành lập công ty cổ phần thiết kế phần mềm tại quận ABENO

Năm 1986 tháng 12
Mở thêm chi nhánh tại NAGOYA

Năm 1987 tháng 4
Thành lập trường kinh tế máy tính wakayama

Năm 1988
Chuyển trụ sở chính đến NISISINSAIBASHI OSAKA

Năm 1990 tháng 5
Thành lập trụ sở kinh doanh WAKAYAMA ,
Chuyển trụ sở chính đến MINAMISENBA

Năm 2002 tháng 1
Thành lập trụ sở kinh doanh TOKYO tại KANDA

Năm 2006 tháng 5
Thăng Cấp từ trụ sở kinh doanh TOKYO lên chính nhánh TOKYO

Năm 2006 tháng 7
chuyển trụ sở chính đến BAKUROU

Năm 2007 tháng 9
Chuyển chi nhánh TOKYO đến HIGASHIGOTANDA

Năm 2009 tháng 6
Chuyển chi nhánh NAGOYA đến MARUNOUCHI

Năm 2009 tháng 7
Chuyển chi nhánh TOKYO đến SEGATAYA

Năm 2011 tháng 2
lấy được bằng ISMS

Năm 2015 tháng 1
Đăng kí sửa đổi tiêu chuẩn ISO

Năm 2016 tháng 10
Chuyển chi nhánh NAGOYA đến ga NAGOYA

Tính đến thời điểm hiện tại



OPEN CAMPUS AND AO EXAM SCHEDULE 2025

July 12th	August 16th	September 13th
October 18th	November 15th	December 6th

🕒 Event time

10:00 AM ~

Open Campus Participation Benefits

Wakayama Prefecture:

500 yen

OSAKA, Other prefectures

1000 yen

※Please make your open campus reservation through the QR code below by 5:00 PM one week prior to the event.

※If you are late for the start time, you will not be able to participate.

※If you wish to apply for AO admission after participating in the open campus, please enclose the AO admission entry sheet, academic transcript, and attendance certificate and mail them to our school by the entry deadline listed in the "Application Guidelines."

EXAMINATION SCHEDULE 2026

January 18th	February 8th	March 1st
--------------	--------------	-----------

🕒 Examination Start Time

10:00 AM ~

※The examination may not be held if the capacity is reached.

※Please check the "International Student Application Guidelines 2026" for application methods and required documents.



〒640-8341 Wakayama City, Kuroda, 41-1

8 minutes walk from the East Exit of JR Wakayama Station.

CONTACT INFORMATION

TEL (073) 474-0200

(※平日 9:00 ~ 17:00 まで受付)

Email office@myros.ac.jp

Web <https://www.myros.ac.jp/>



CLICK HERE
TO APPLY FOR
THE OPEN CAMPUS!